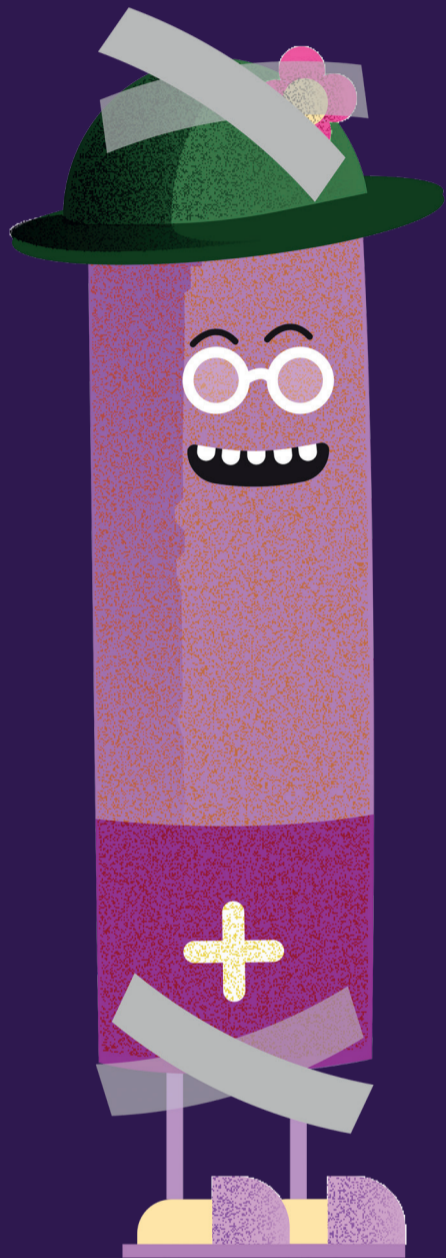
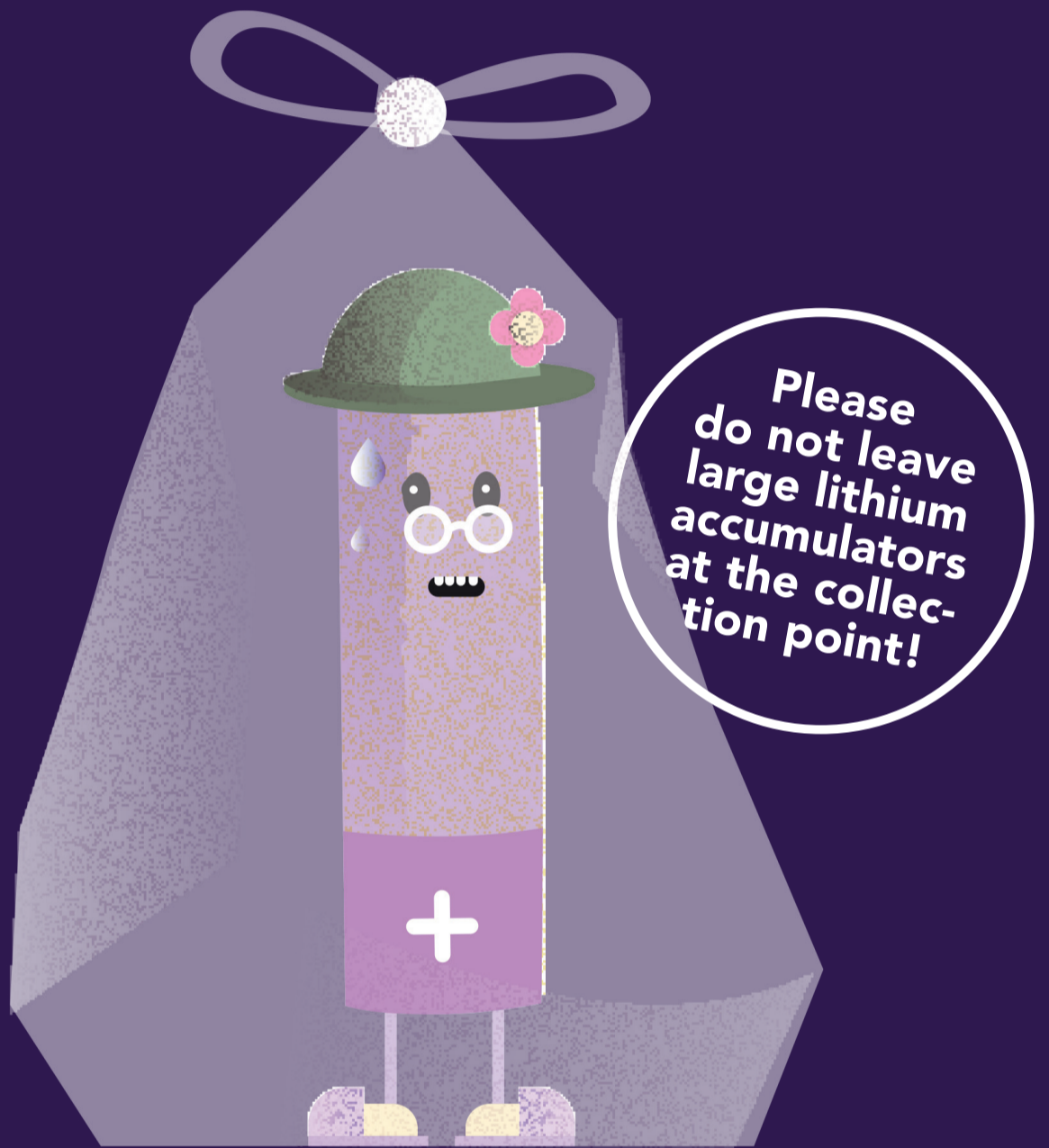


How to recycle batteries and accumulators



1. Cover the terminals with tape.



2. Place leaking batteries and accumulators in a bag.

Lithium batteries and accumulators are especially prone to reacting to other batteries and metal objects, which is why you should tape the terminals of all batteries and accumulators. Please do not leave large lithium accumulators at the collection point. Large lithium accumulators, such as those of electric bicycles and self-balancing scooters, can be returned to regional collection points. You can find your nearest regional collection point at: www.kierratys.info.